

Chula Vista Medical Arts II

450 4th Avenue, Chula Vista, CA 91910

Now Leasing



Leasing Manager
Bryan McKenney
(949) 478 - 0087 | LIC#01505792
bmckenney@cypresswestpartners.com

Chula Vista Medical Arts II

450 4th Avenue, Chula Vista, CA 91910

Now Leasing

FEATURES:

- 4 story medical office building
- 36,586 SF of total building size
- Dual elevator served
- Covered tenant parking
- Excellent demographics
- On Campus of Scripps Mercy Hospital Chula Vista
- Professionally managed
- Walking distance to retail amenities

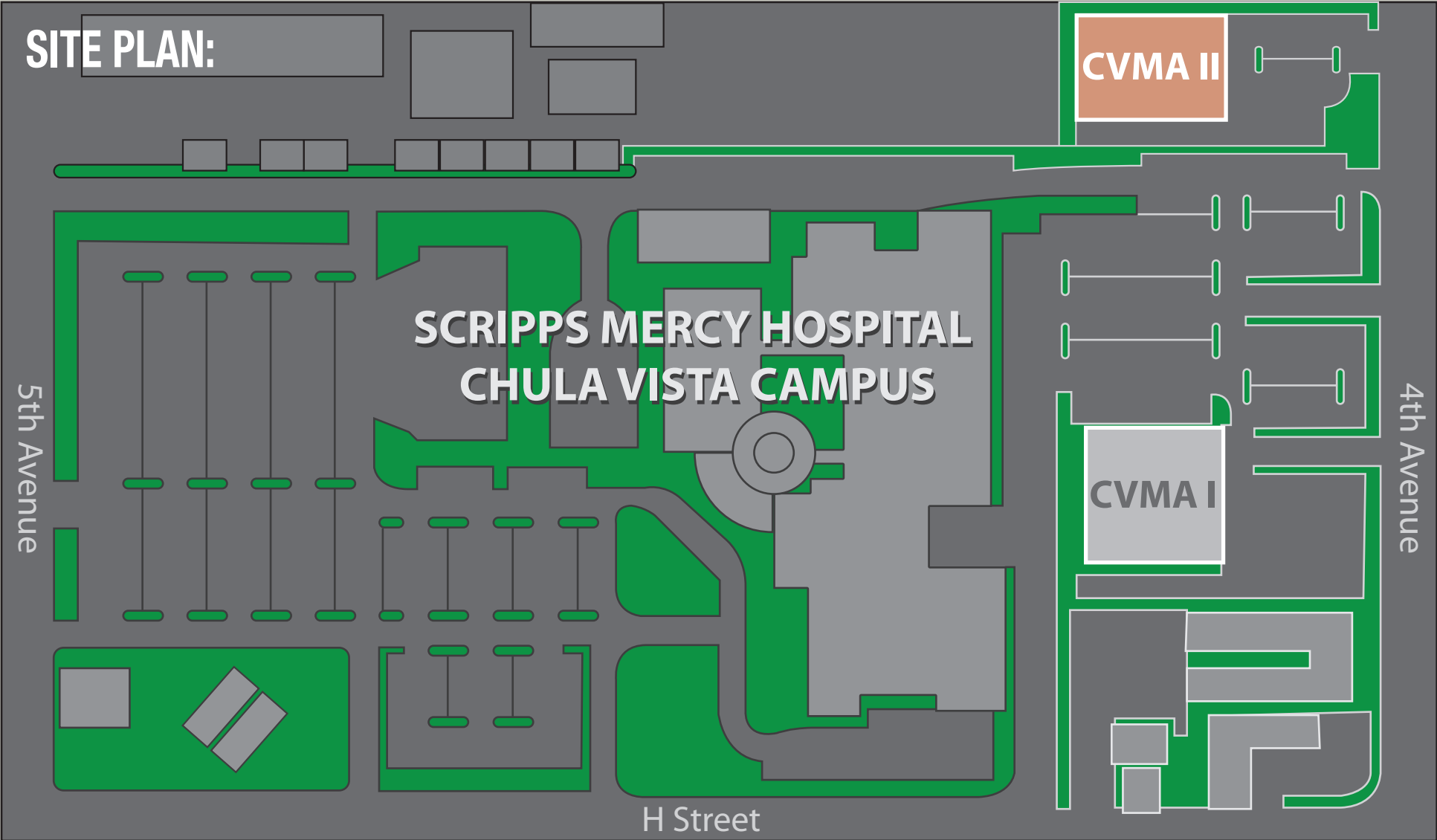


Leasing Manager
Bryan McKenney
(949) 478 - 0087 | LIC#01505792
bmckenney@cypresswestpartners.com

Chula Vista Medical Arts II

450 4th Avenue, Chula Vista, CA 91910

Now Leasing



Leasing Manager
Bryan McKenney
(949) 478 - 0087 | LIC#01505792
bmckenney@cypresswestpartners.com

Chula Vista Medical Arts II

450 4th Avenue, Chula Vista, CA 91910

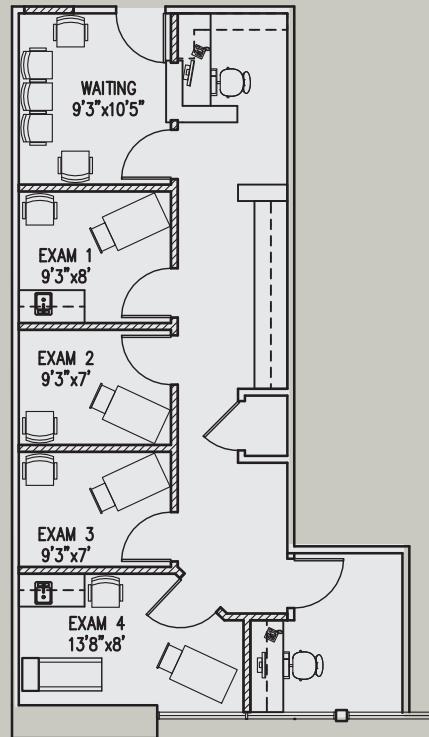
Now Leasing

FLOOR PLAN:

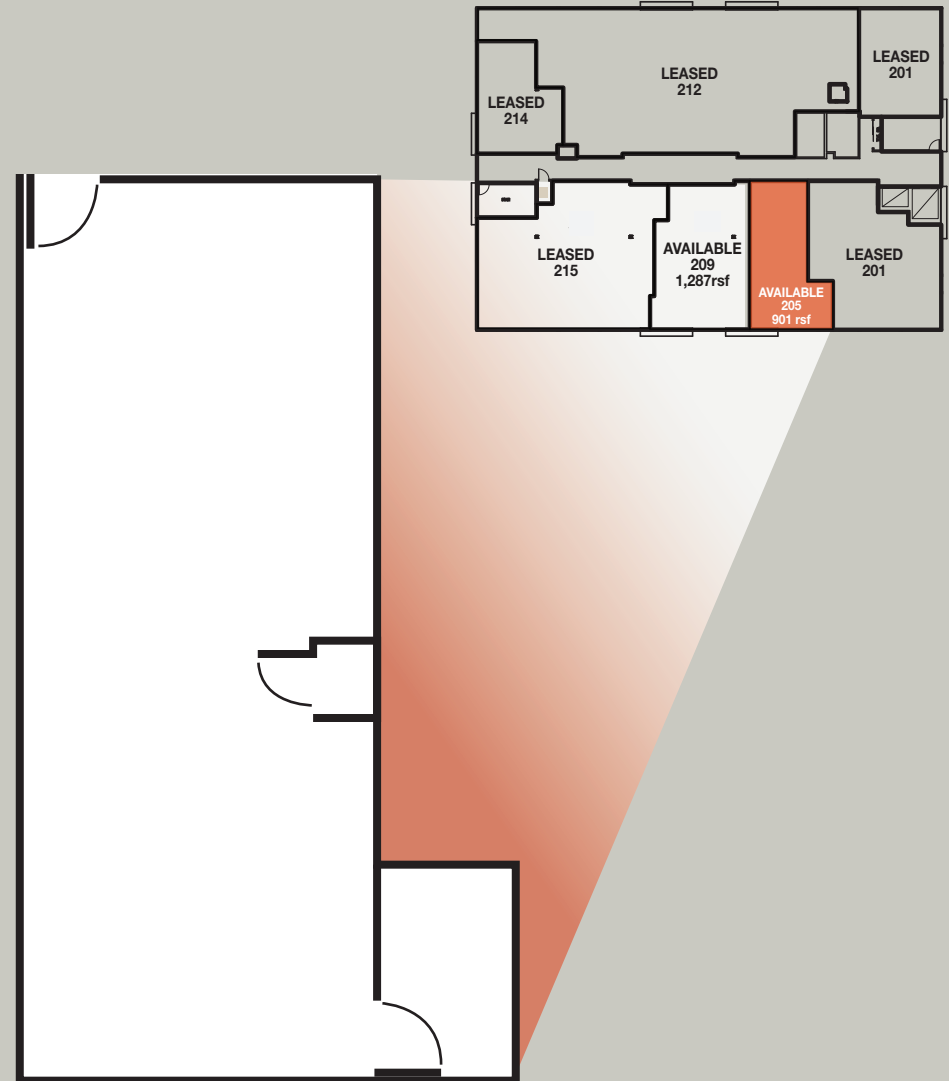
AVAILABLE SUITE: SUITE 205 - 901 SF

Open office space ready for
your practice's customization.

LEASE RATE:
\$2.25 NNN



* Sample Floor Plan Layout



Chula Vista Medical Arts II

450 4th Avenue, Chula Vista, CA 91910

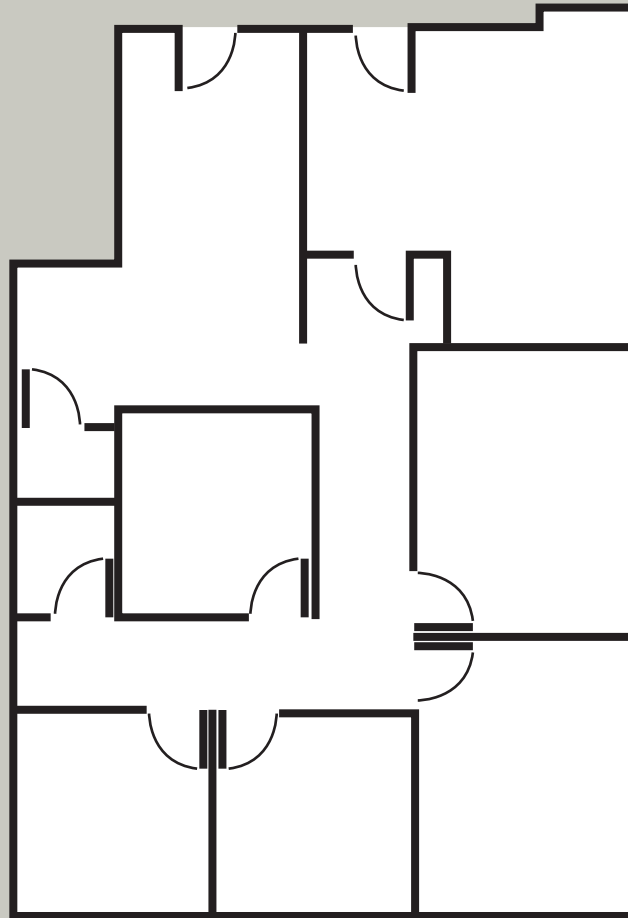
Now Leasing

FLOOR PLAN:

AVAILABLE SUITE:
SUITE 209 - 1,287 SF

4 Exam rooms, Doctors office,
In-Suite restroom,
and Reception / Admin.

LEASE RATE:
\$2.25 NNN



Leasing Manager
Bryan McKenney
(949) 478 - 0087 | LIC#01505792
bmckenney@cypresswestpartners.com

Chula Vista Medical Arts II

450 4th Avenue, Chula Vista, CA 91910

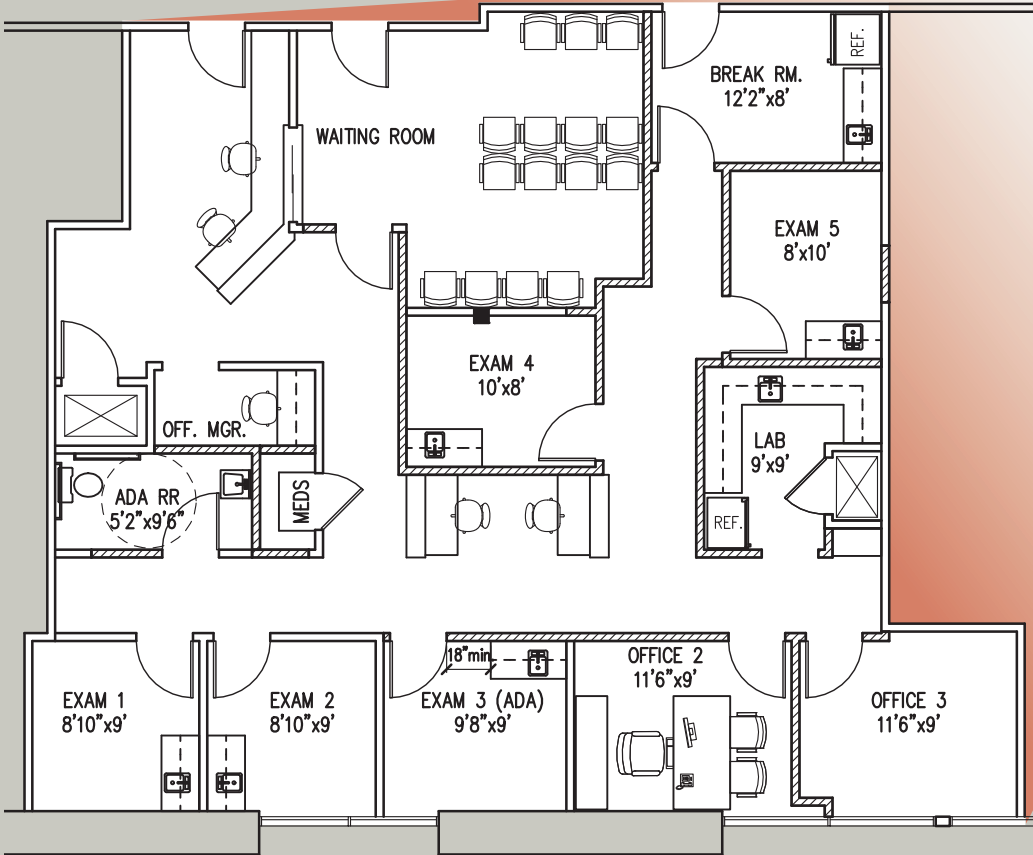
Now Leasing

FLOOR PLAN:

AVAILABLE SUITE:

SUITE 205-209
- 2,188 SF

LEASE RATE:
\$2.25 NNN



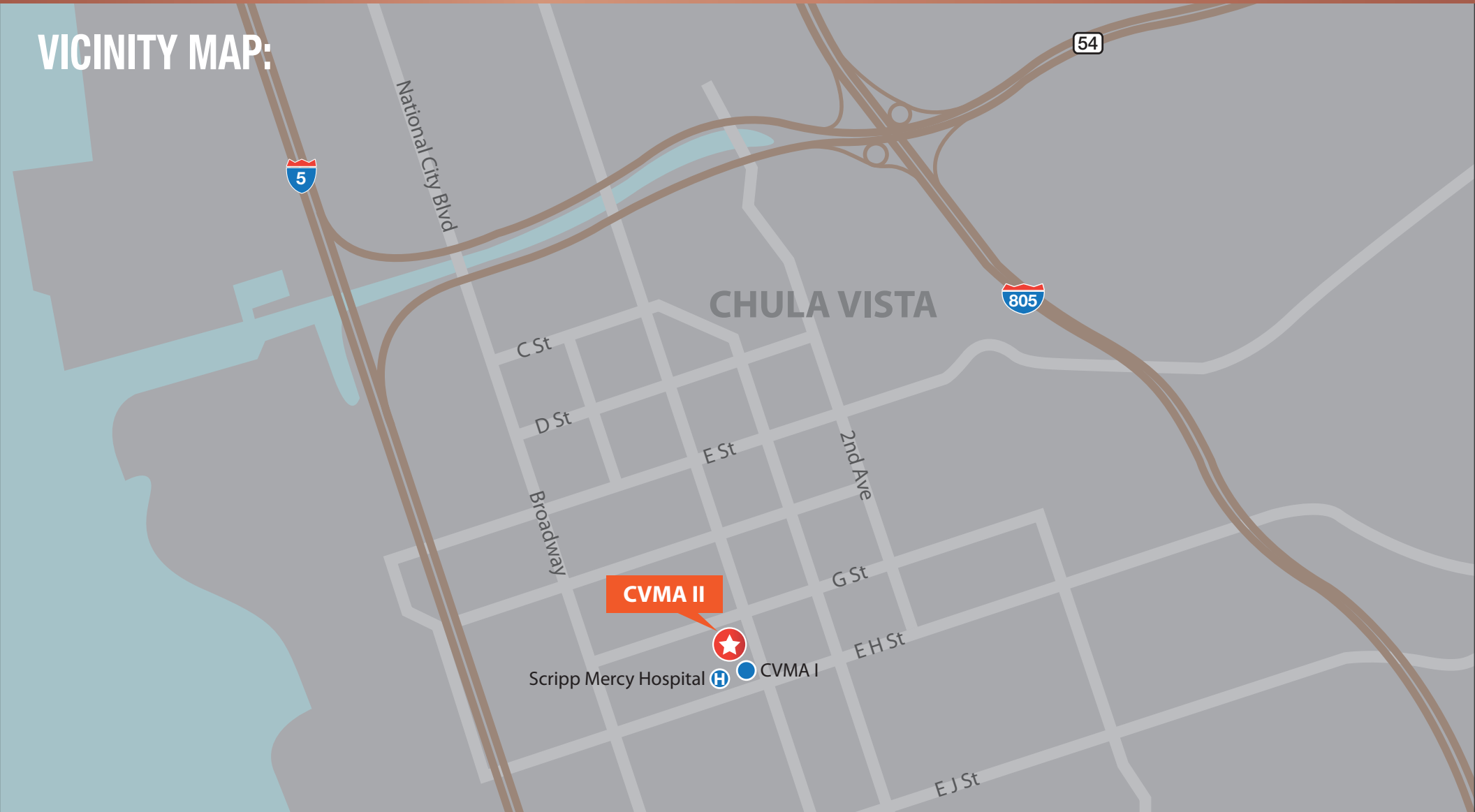
Leasing Manager
Bryan McKenney
(949) 478 - 0087 | LIC#01505792
bmckenney@cypresswestpartners.com

Chula Vista Medical Arts II

450 4th Avenue, Chula Vista, CA 91910

Now Leasing

VICINITY MAP:



Leasing Manager
Bryan McKenney
(949) 478 - 0087 | LIC#01505792
bmckenney@cypresswestpartners.com