

RSM Health Center 22032 El Paseo - Rancho Santa Margarita



A 24,846± Sq. Ft.,
Two Story-Medical
Office Building



Bryan McKenney
(949) 478 - 0087 | LIC#01505792
bmckenney@cypresswestpartners.com

Casey P. Immel
(949) 339 - 1875 | LIC#01312850
cimmel@cypresswestpartners.com

RSM Health Center

22032 El Paseo - Rancho Santa Margarita



PROPERTY OVERVIEW



PROPERTY FEATURES:

Building Size	24,846± square feet
Lot Size	1.58± acres
Stories	2
Parking	Surface parked
Elevator	1, passenger
Signage	Building top and monument
Year Built	2001
HVAC	Individual package units

AVAILABLE SUITES:

Suite 160	1,522± SF	\$2.75 NNN	Former Pediatric Suite
-----------	-----------	------------	------------------------



Bryan McKenney
(949) 478 -0087 | LIC#01505792
bmckenney@cypresswestpartners.com

Casey P. Immel
(949) 339 -1875 | LIC#01312850
cimmel@cypresswestpartners.com

RSM Health Center 22032 El Paseo - Rancho Santa Margarita



LAKE MISSION VIEJO

VICINITY MAP

Antonio Pkwy

Avenida De Las Banderas

Alicia Pkwy

241 Toll Road (Traffic Count 43,354)

Avenida De Las Flores

RANCHO SANTA MARGARITA TOWN CENTER

PLAZA EL PASEO

RANCHO SANTA MARGARITA CIVIC PLAZA

SITE
El Paseo

BUENA VIDA at TOWN CENTER

CENTRAL PARK

Buena Suerte

Santa Margarita Pkwy (Traffic Count 40,879)



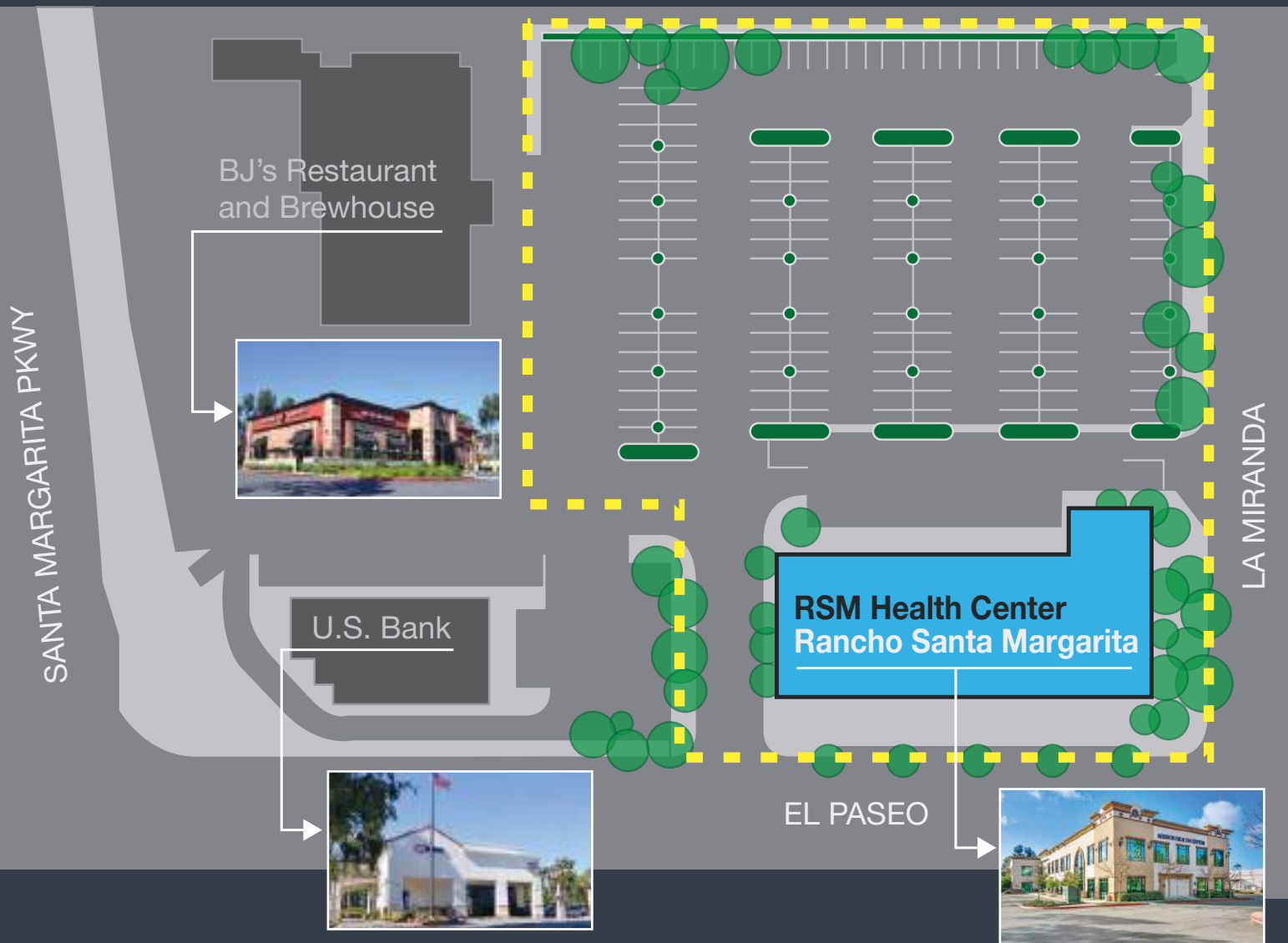
Bryan McKenney
(949) 478 - 0087 | LIC#01505792
bmckenney@cypresswestpartners.com

Casey P. Immel
(949) 339 - 1875 | LIC#01312850
cimmel@cypresswestpartners.com

RSM Health Center 22032 El Paseo - Rancho Santa Margarita



SITE MAP



Bryan McKenney
(949) 478 - 0087 | LIC#01505792
bmckenney@cypresswestpartners.com

Casey P. Immel
(949) 339 - 1875 | LIC#01312850
cimmel@cypresswestpartners.com

RSM Health Center 22032 El Paseo - Rancho Santa Margarita



AMENITIES MAP



Bryan McKenney
(949) 478 - 0087 | LIC#01505792
bmckenney@cypresswestpartners.com

Casey P. Immel
(949) 339 - 1875 | LIC#01312850
bmckenney@cypresswestpartners.com

RSM Health Center 22032 El Paseo - Rancho Santa Margarita



VIRTUAL TOUR



TO TAKE A VIRTUAL TOUR OF THE FIRST FLOOR



Bryan McKenney
(949) 478 - 0087 | LIC#01505792
bmckenney@cypresswestpartners.com

Casey P. Immel
(949) 339 - 1875 | LIC#01312850
cimmel@cypresswestpartners.com

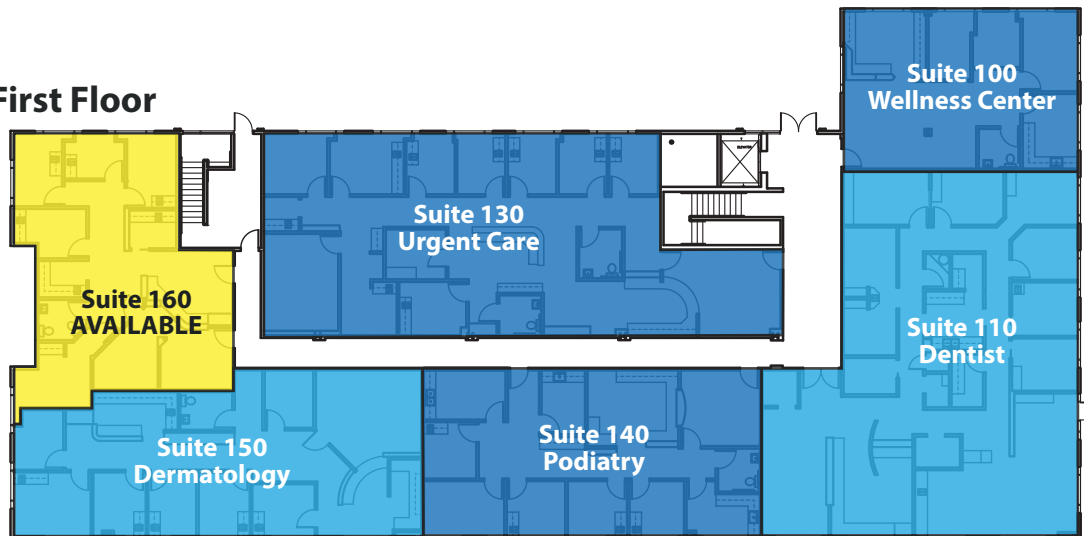
RSM Health Center

22032 El Paseo - Rancho Santa Margarita

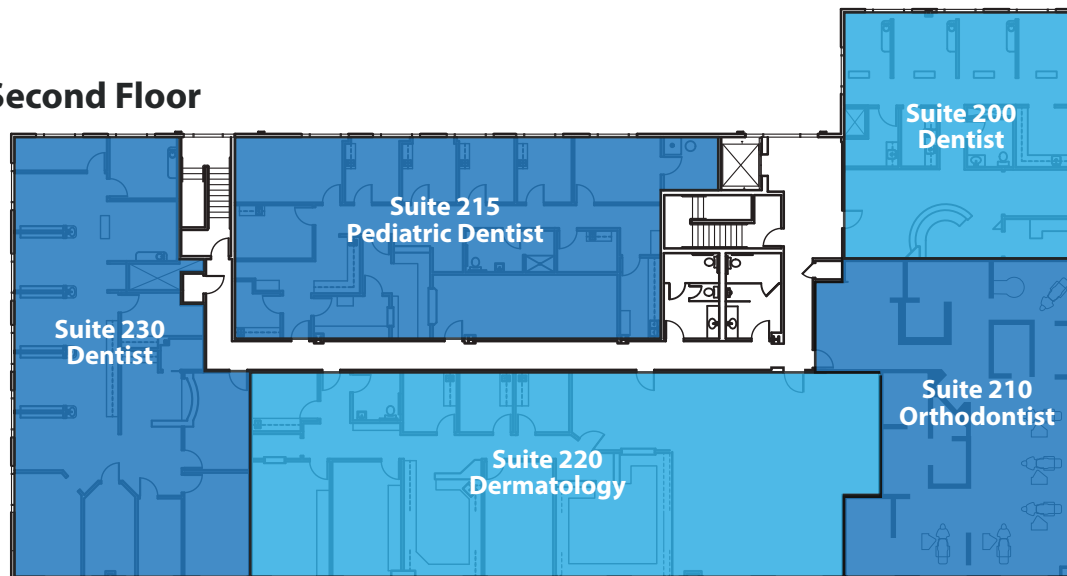


FLOOR PLATES

First Floor



Second Floor



AVAILABLE SUITES:

Suite 160 1,522± SF \$2.75 NNN Former pediatric suite



Bryan McKenney
 (949) 478 - 0087 | LIC#01505792
 bmckenney@cypresswestpartners.com

Casey P. Immel
 (949) 339 - 1875 | LIC#01312850
 cimmel@cypresswestpartners.com

RSM Health Center 22032 El Paseo - Rancho Santa Margarita



FLOOR PLAN SUITE 160

Suite 160 1,522± SF \$2.75 NNN

Former Pediatric Suite; 5 Exam Rooms; Lab;
1 In-Suite Restroom; Doctor's Office; Reception / Admin

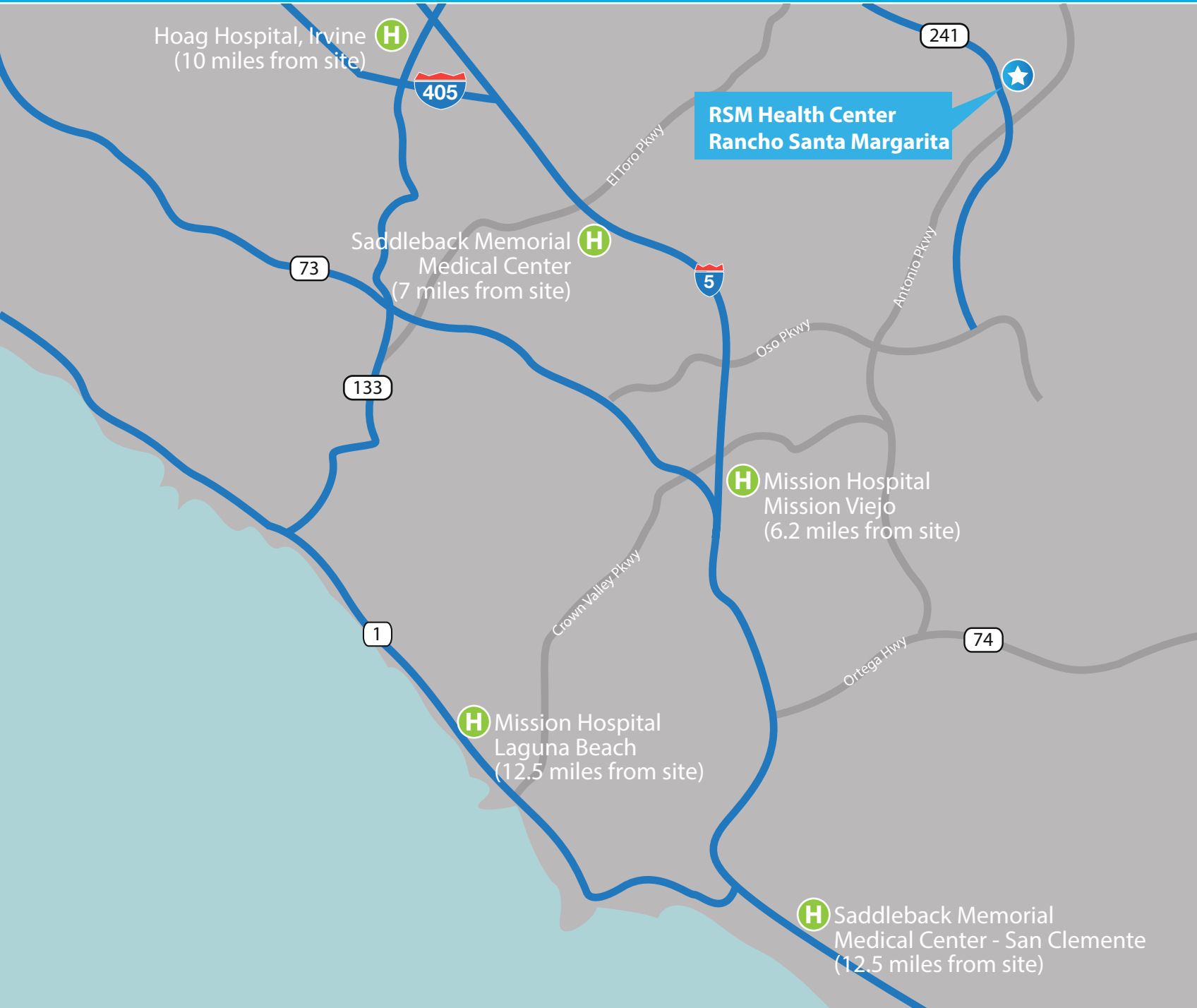
[Click!](#) for Virtual Tour



Bryan McKenney
(949) 478 - 0087 | LIC#01505792
bmckenney@cypresswestpartners.com

Casey P. Immel
(949) 339 - 1875 | LIC#01312850
cimmel@cypresswestpartners.com

RSM Health Center 22032 El Paseo - Rancho Santa Margarita



PROXIMITY MAP



Bryan McKenney
(949) 478 - 0087 | LIC#01505792
bmckenney@cypresswestpartners.com

Casey P. Immel
(949) 339 - 1875 | LIC#01312850
cimmel@cypresswestpartners.com