

Barranca Medical Plaza

62 Corporate Park, Irvine, CA 92606

Now Leasing

BarrancaMedicalPlaza.com



Cypress West
— P A R T N E R S —
ACQUIRE • MANAGE • LEASE

Bryan McKenney
(949) 478 - 0087 | LIC#01505792
bmckenney@cypresswestpartners.com

Casey P. Immel
(949) 339 - 1875 | LIC#01312850
cimmel@cypresswestpartners.com

Barranca Medical Plaza

62 Corporate Park, Irvine, CA 92606

Now Leasing

BarrancaMedicalPlaza.com

FEATURES

- 30,000 SF
- 2 Story Building
- 2 Story Atrium lobby
- Abundant Surface Parking
- Medical & Dental Suites
- High End Suite Finishes
- Professionally Managed
- Elevator Served



Cypress West
— P A R T N E R S —
AQUIRE - MANAGE - LEASE

Bryan McKenney
(949) 478 - 0087 | LIC#01505792
bmckenney@cypresswestpartners.com

Casey P. Immel
(949) 339 - 1875 | LIC#01312850
cimmel@cypresswestpartners.com

Barranca Medical Plaza

62 Corporate Park, Irvine, CA 92606

Now Leasing

BarrancaMedicalPlaza.com

SITE PLAN



Cypress West
— P A R T N E R S —
ACQUIRE - MANAGE - LEASE

Bryan McKenney
(949) 478 - 0087 | LIC#01505792
bmckenney@cypresswestpartners.com

Casey P. Immel
(949) 339 - 1875 | LIC#01312850
cimmel@cypresswestpartners.com

Barranca Medical Plaza

62 Corporate Park, Irvine, CA 92606

Now Leasing

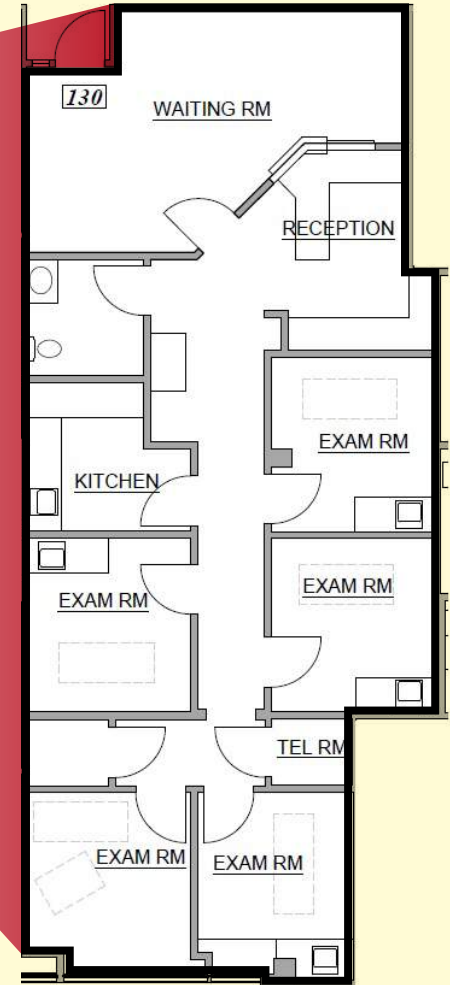
BarrancaMedicalPlaza.com

FLOOR PLAN 1st Floor

AVAILABLE SUITE:
Suite 130 - 1,682 SF

5 Exam rooms, Doctor's office,
In-suite restroom, Reception/Admin,
and Break room

LEASE RATE:
\$4.10 FSG



Cypress West
— P A R T N E R S —
ACQUIRE - MANAGE - LEASE

Bryan McKenney
(949) 478 - 0087 | LIC#01505792
bmckenney@cypresswestpartners.com

Casey P. Immel
(949) 339 - 1875 | LIC#01312850
cimmel@cypresswestpartners.com

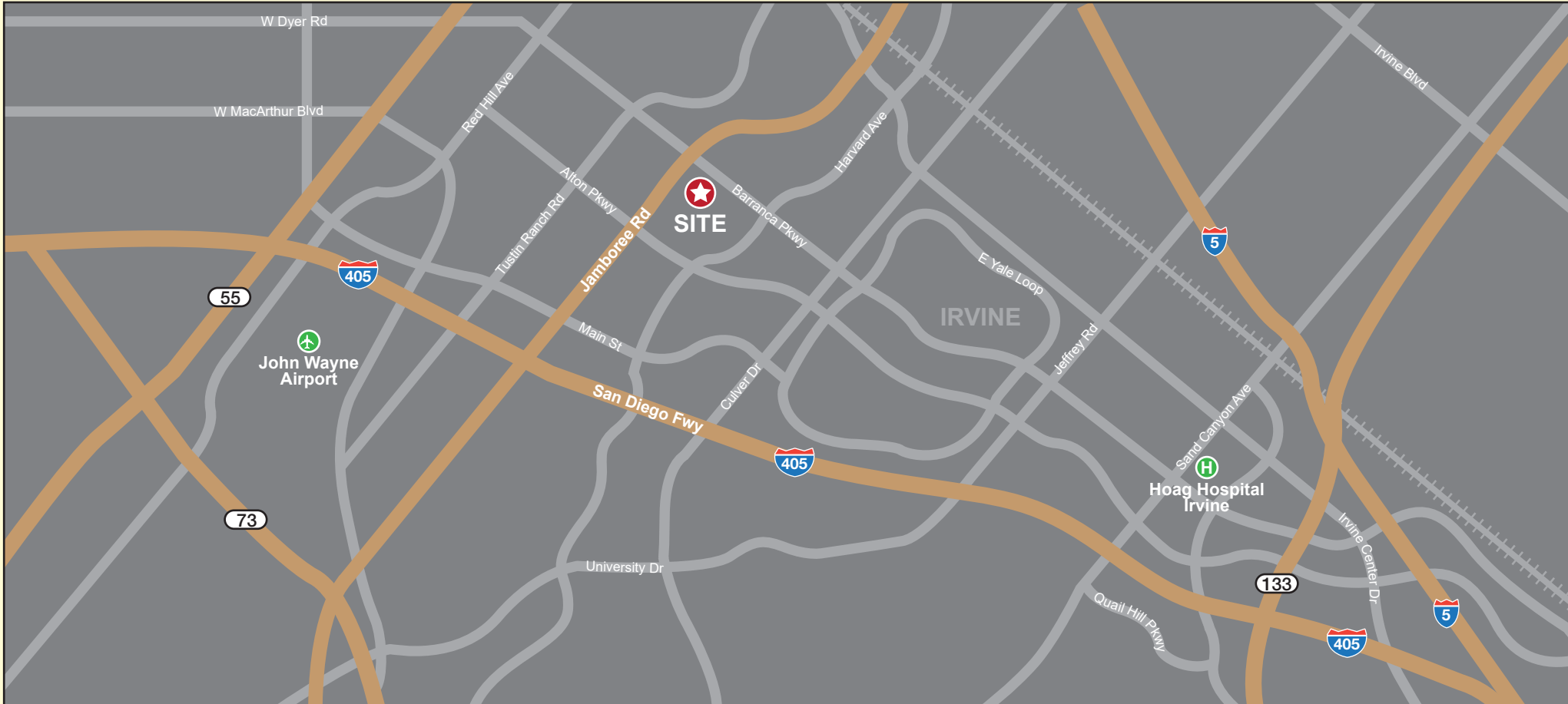
Barranca Medical Plaza

62 Corporate Park, Irvine, CA 92606

Now Leasing

BarrancaMedicalPlaza.com

VICINITY MAP



Cypress West
— P A R T N E R S —
ACQUIRE • MANAGE • LEASE

Bryan McKenney
(949) 478 - 0087 | LIC#01505792
bmckenney@cypresswestpartners.com

Casey P. Immel
(949) 339 - 1875 | LIC#01312850
cimmel@cypresswestpartners.com