

Claremont Medical Plaza

1601 Monte Vista Avenue, Claremont, CA 91711

Now Leasing



Cypress West
— P A R T N E R S —
ACQUIRE • MANAGE • LEASE

Bryan McKenney
(949) 478 - 0087 | LIC#01505792
bmckenney@cypresswestpartners.com

Casey P. Immel
(949) 339 - 1875 | LIC#01312850
cimmel@cypresswestpartners.com

Claremont Medical Plaza

1601 Monte Vista Avenue, Claremont, CA 91711

Now Leasing



FEATURES:

- 48,984 SF
- 2 story Medical Office Building
- Class A Medical Building
- Surface Parking
- Elevator Served
- Excellent Demographics
- Professionally Managed



Cypress West
— P A R T N E R S —
ACQUIRE • MANAGE • LEASE

Bryan McKenney
(949) 478 - 0087 | LIC#01505792
bmckenney@cypresswestpartners.com

Casey P. Immel
(949) 339 - 1875 | LIC#01312850
cimmel@cypresswestpartners.com

Claremont Medical Plaza

Now Leasing

1601 Monte Vista Avenue, Claremont, CA 91711

SITE PLAN:



Cypress West
— P A R T N E R S —
ACQUIRE • MANAGE • LEASE

Bryan McKenney
(949) 478 - 0087 | LIC#01505792
bmckenney@cypresswestpartners.com

Casey P. Immel
(949) 339 - 1875 | LIC#01312850
cimmel@cypresswestpartners.com

Claremont Medical Plaza

Now Leasing

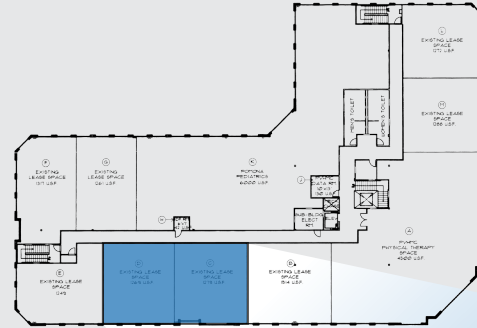
1601 Monte Vista Avenue, Claremont, CA 91711

AVAILABLE SUITE:

Suite 240 - 1,331 SF

Suite 250 - 1,123 SF

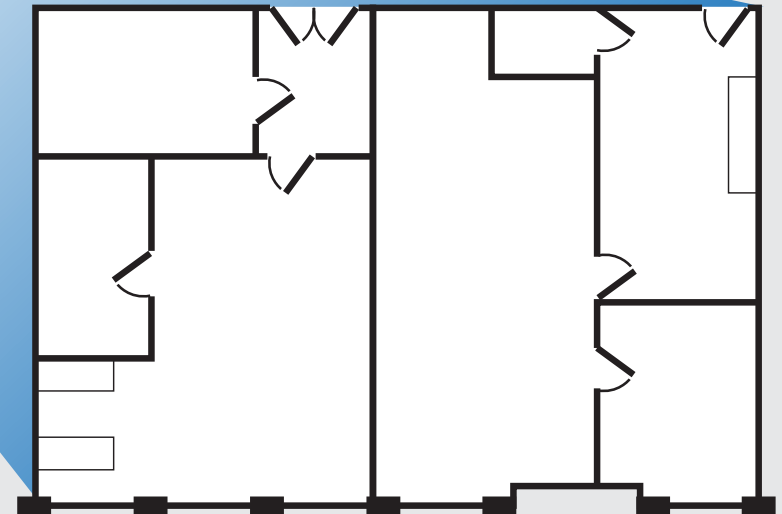
(Suite 240, 250 & 260 contiguous)



SUITE RATE:

\$2.60 NNN

SUITE DESCRIPTION:



Coming soon

Click! for Virtual Tour



Cypress West
— P A R T N E R S —
ACQUIRE • MANAGE • LEASE

Bryan McKenney
(949) 478 - 0087 | LIC#01505792
bmckenney@cypresswestpartners.com

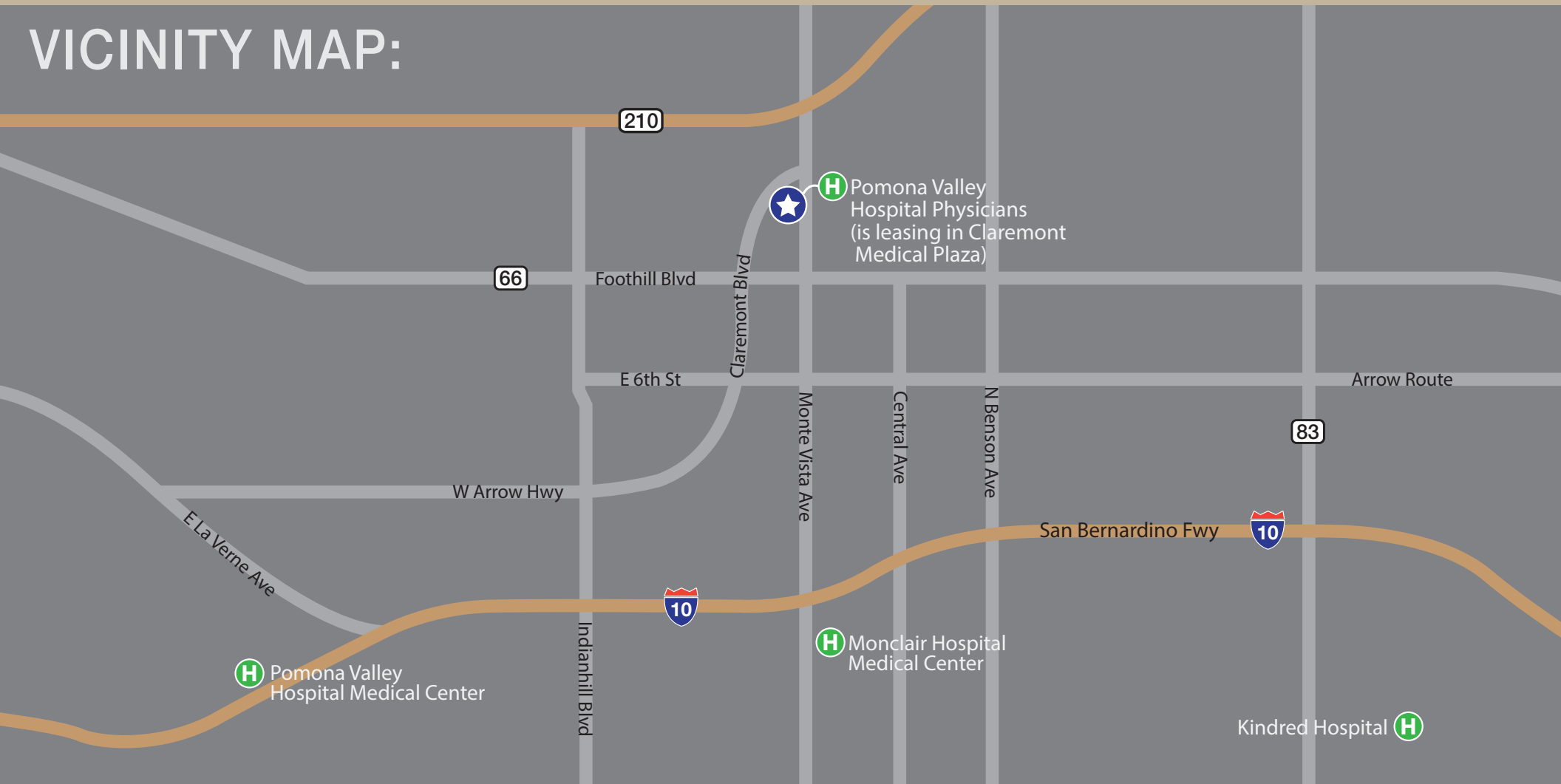
Casey P. Immel
(949) 339 - 1875 | LIC#01312850
cimmel@cypresswestpartners.com

Claremont Medical Plaza

Now Leasing

1601 Monte Vista Avenue, Claremont, CA 91711

VICINITY MAP:



Cypress West
— P A R T N E R S —
ACQUIRE • MANAGE • LEASE

Bryan McKenney
(949) 478 - 0087 | LIC#01505792
bmckenney@cypresswestpartners.com

Casey P. Immel
(949) 339 - 1875 | LIC#01312850
cimmel@cypresswestpartners.com