

ProMed Medical Building of Yuma

2270 Ridgeview Drive, Yuma, AZ 85364

Now Leasing



Bryan McKenney
(949) 478 - 0087
bmckenney@cypresswestpartners.com

ProMed Medical Building of Yuma

2270 Ridgeview Drive, Yuma, AZ 85364

Now Leasing



FEATURES

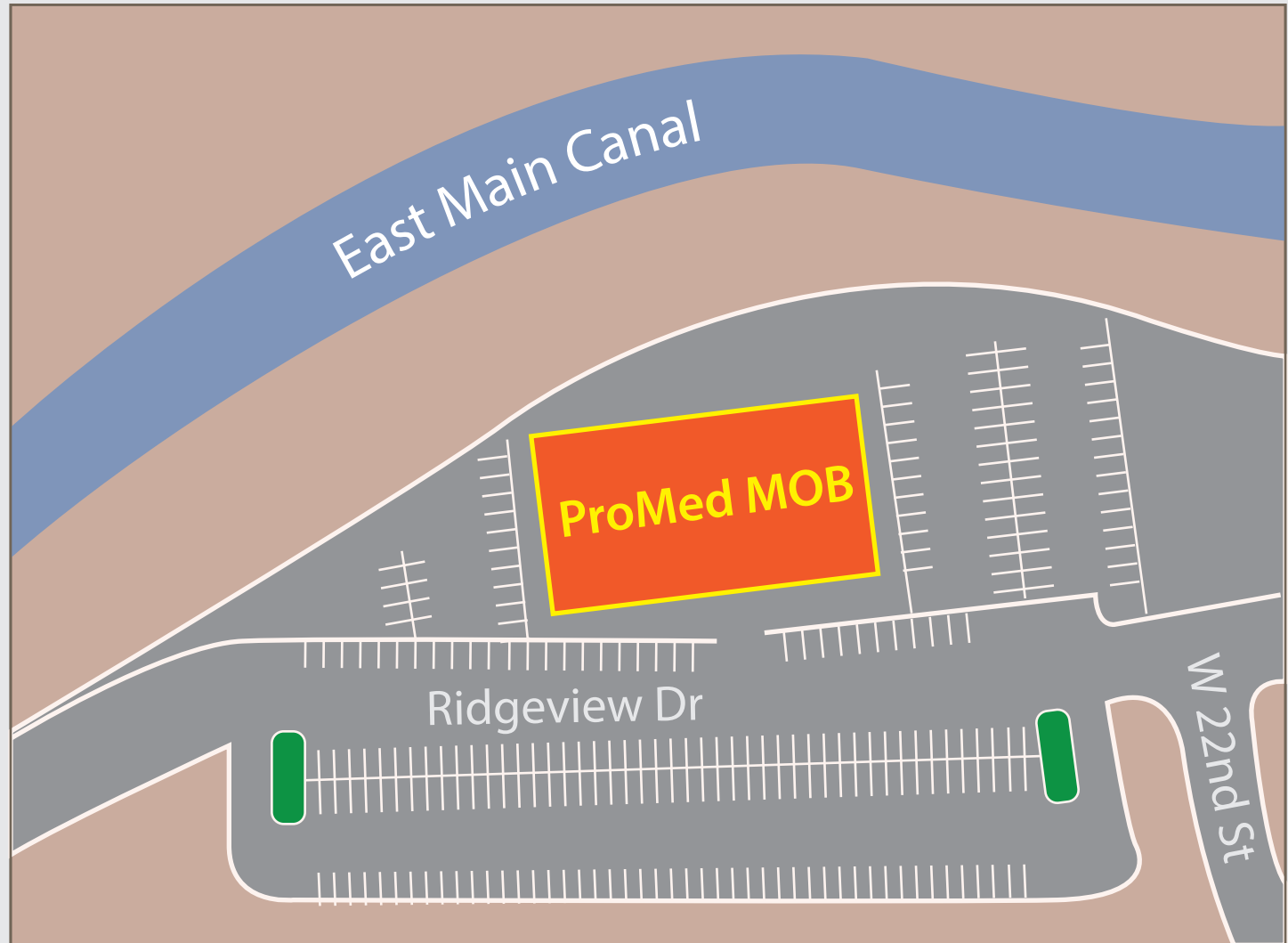
- 47,813 SF • 3 Story Medical Building • Professionally Managed
- Located directly across from Yuma Regional Medical Center
- An average daily traffic count in excess of 30,000 vehicles
- Best in Class Medical Building • Elevator Served

ProMed Medical Building of Yuma

2270 Ridgeview Drive, Yuma, AZ 85364

Now Leasing

SITE PLAN



ProMed Medical Building of Yuma

2270 Ridgeview Drive, Yuma, AZ 85364

Now Leasing

FLOOR PLAN

AVAILABLE SUITE:

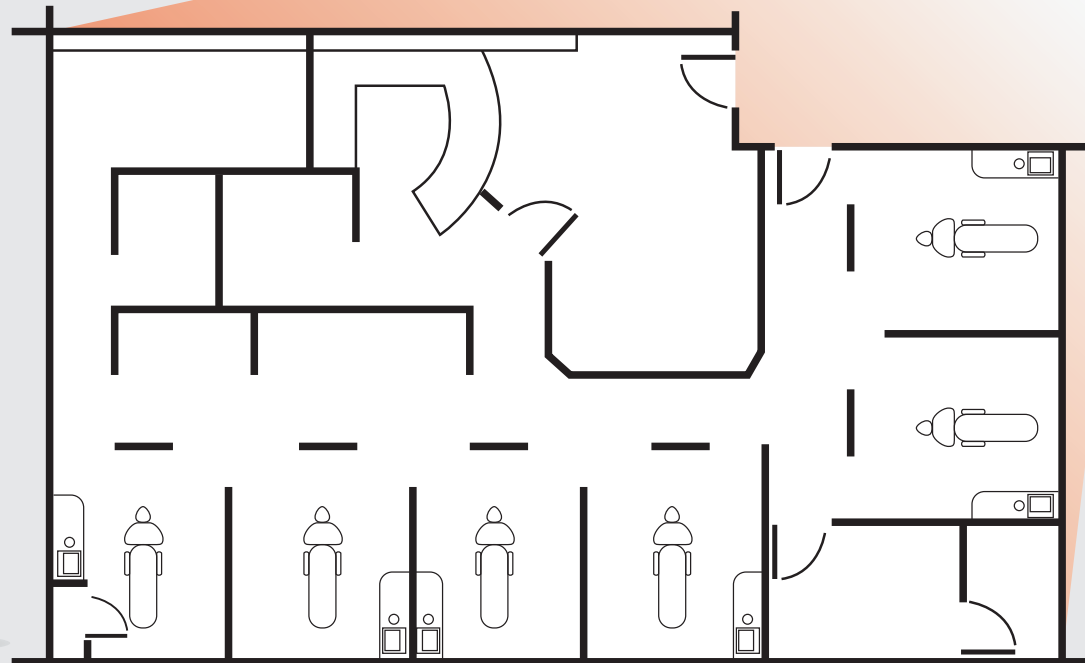
Suite 204 - 2,105 rsf

LEASE RATE:

\$1.75 NNN

SUITE DESCRIPTION:

Dental Suite: Fully built out, 6-operator suite with high-end finishes throughout. This is a turn-key suite.



Click! for Virtual Tour



ProMed Medical Building of Yuma

2270 Ridgeview Drive, Yuma, AZ 85364

Now Leasing

FLOOR PLAN

AVAILABLE SUITE:

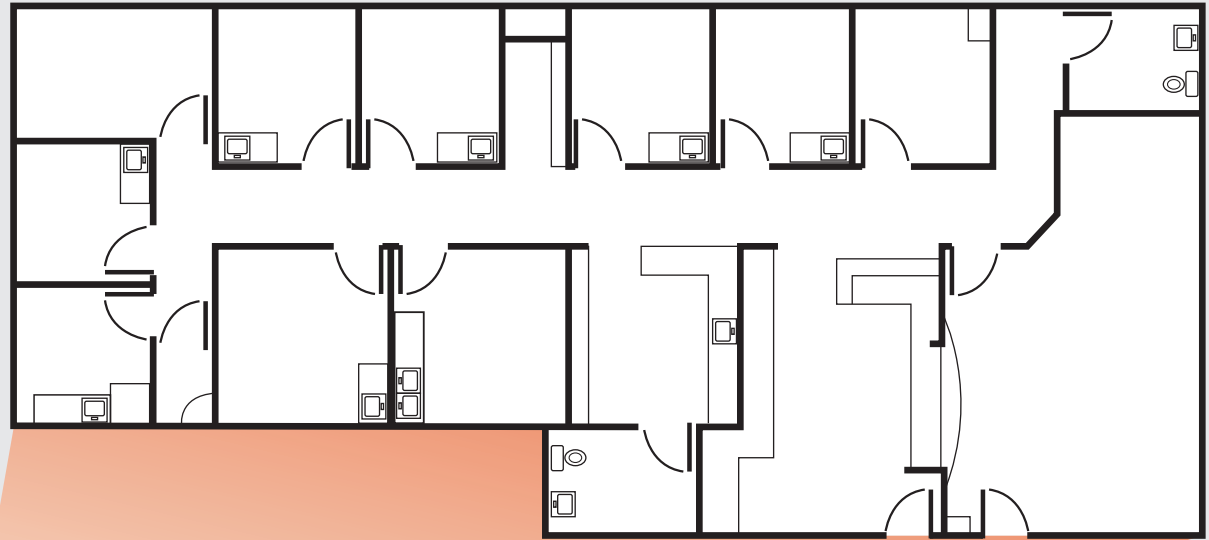
Suite 302 - 2,901 rsf

LEASE RATE:

\$1.75 NNN

SUITE DESCRIPTION:

exam rooms, private bathrooms, breakroom, lab, and admin/reception space.



Coming soon

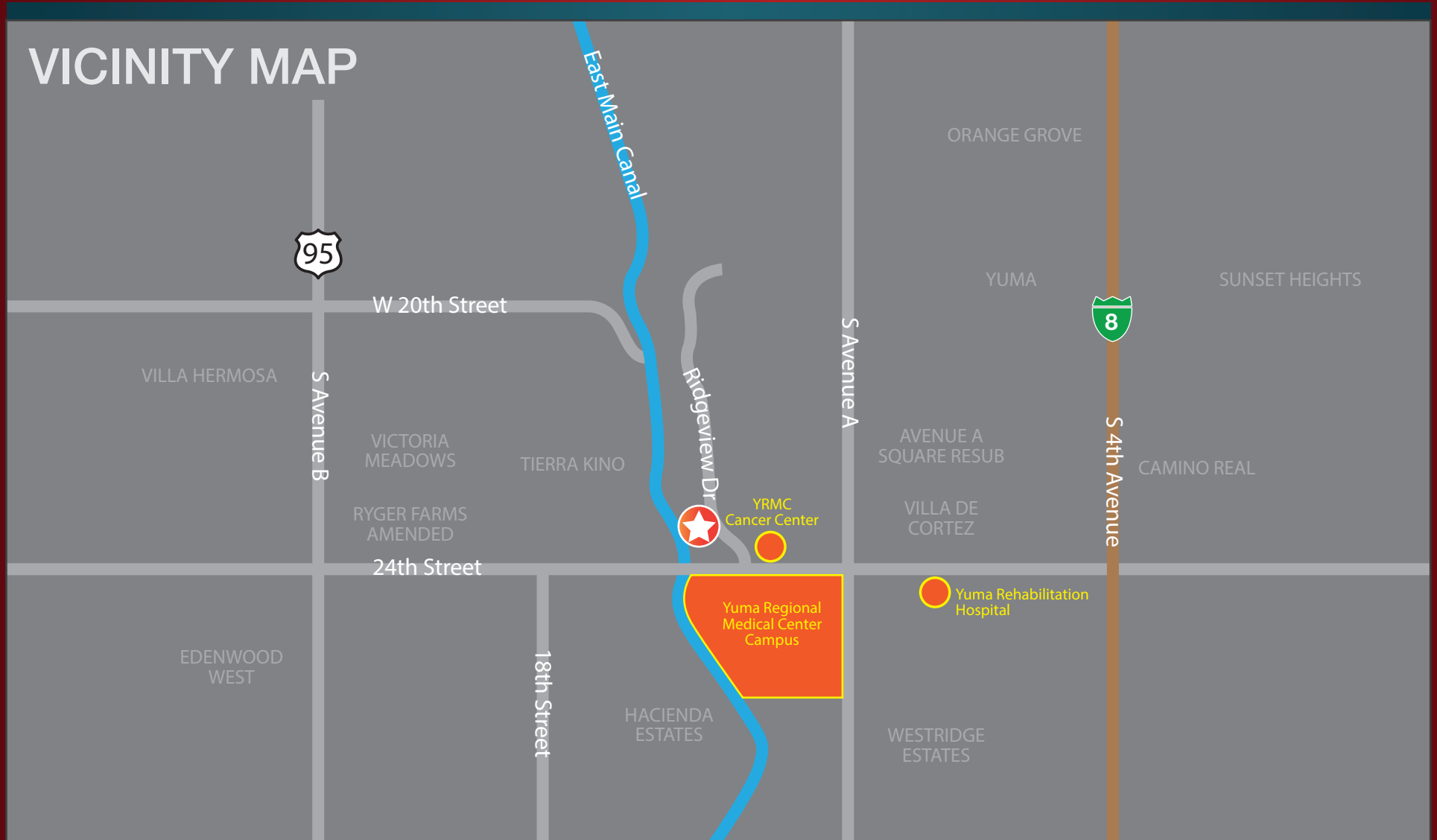
Click! for Virtual Tour



ProMed Medical Building of Yuma

2270 Ridgeview Drive, Yuma, AZ 85364

Now Leasing



Bryan McKenney
(949) 478 - 0087
bmckenney@cypresswestpartners.com